



Sustainable technology . Limitless Color . Ultimate performance

enviroleather™  
envirosil™  
envirowoven™  
enviroleather prints™



**LDIinteriors™**  
Sustainable Technology . Limitless color . Ultimate Performance

# Designed to inspire

LDI's color palette is inspired by global design and trend research.

300 + inline  
Solids  
Textures  
Patterns  
Wovens



Unlimited Custom color patterns that ship in 15 business days.

enviroleather™

envirosil™

envirowoven™

enviroleather prints™





Healthcare . Workplace . Education . Hospitality

# Designed to perform

LDI's exclusive, proprietary technology is at the heart of every enviro collection. Designed to be a healthier alternative to PVC (vinyl) and to outperform traditional PVC-free upholstery.



# LDI labs verify the material science that defines all LDI materials.

LDI test protocol is unmatched.

Testing all materials in our facility to meet and exceed contract performance standards.

Supporting our industry leading warranty for Performance, Quality, Color & Cleanability.

Wyzenbeek

Seam Abrasion testing

Taber Abrasion testing

Flex testing



Abrasion

Flammability

Croaking

Weight

Colorfastness

LDI is a principal member of ACT

enhance your sustainability story without sacrificing performance.



**Ultimate performance**

- Liquid barrier
- Chemical resistant
- Stain resistant
- Abrasion resistant

**Sustainable Technology**

- PFAS free, including PFC's + PFOA's
- PVC – Free, no plasticizers
- Passes CAL 01350, low VOC emissions
- No antimicrobial chemicals
- No flame retardants
- No heavy metals

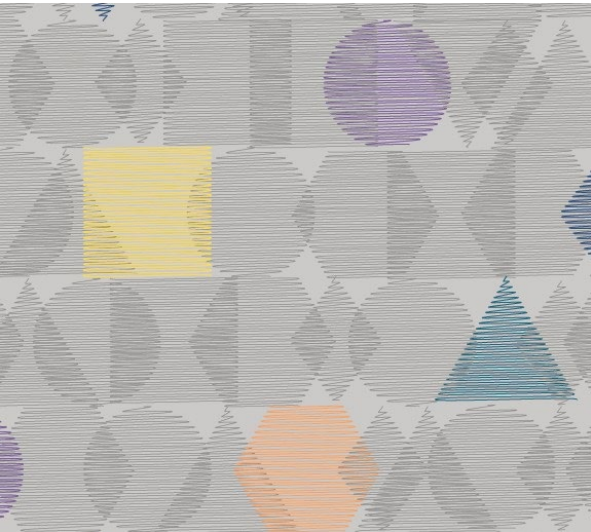


Healthcare : Hubbard Center, Children's Hospital of Omaha

# Designed with purpose

*"Growth projections have made it abundantly clear that Children's must grow in scope and space to continue to meet the needs of our children and families. This is why we built the Hubbard Center for Children, to become one of the nation's leaders in pediatric health care."*

HDR Architects / SBI / ERG / IOA



Custom Enviroleather pattern™



Education: Harvard University  
Richard A. and Susan F Smith  
Campus center

## Designed to educate

It is part of Harvard's ongoing 'Common Spaces' initiatives, intended to ensure that its physical spaces foster intellectual, cultural, and social experiences on campus.

Flexible interior spaces for performances and other events attract and mix the university's varied constituencies—faculty, undergraduates, staff, graduate students, and visitors from the public-at-large.

Hopkins Architects  
Creative Office Resources

**HARVARD**  
UNIVERSITY



### Awards

- 2021 BE+ Green Building Showcase | Health + Wellness Award
- 2019 Boston Society of Architects | Harleston Parker Medal Winner
- 2019 Boston Society of Architects | Education Facilities Design Award

Enviroleather™ California collection



Transportation : American Airlines Admirals Club

CLT – Douglas International Airport

PHL – Philadelphia International Airport

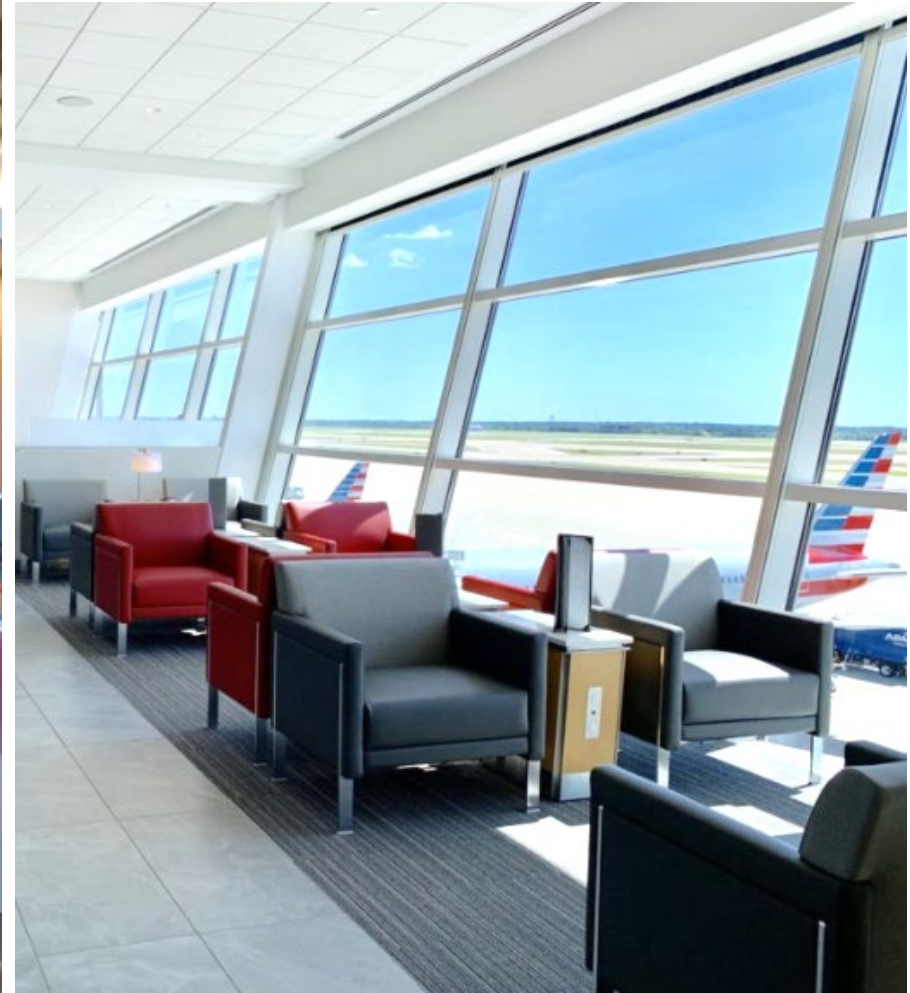
DFW – Dallas Fort Worth International

Designed for travel

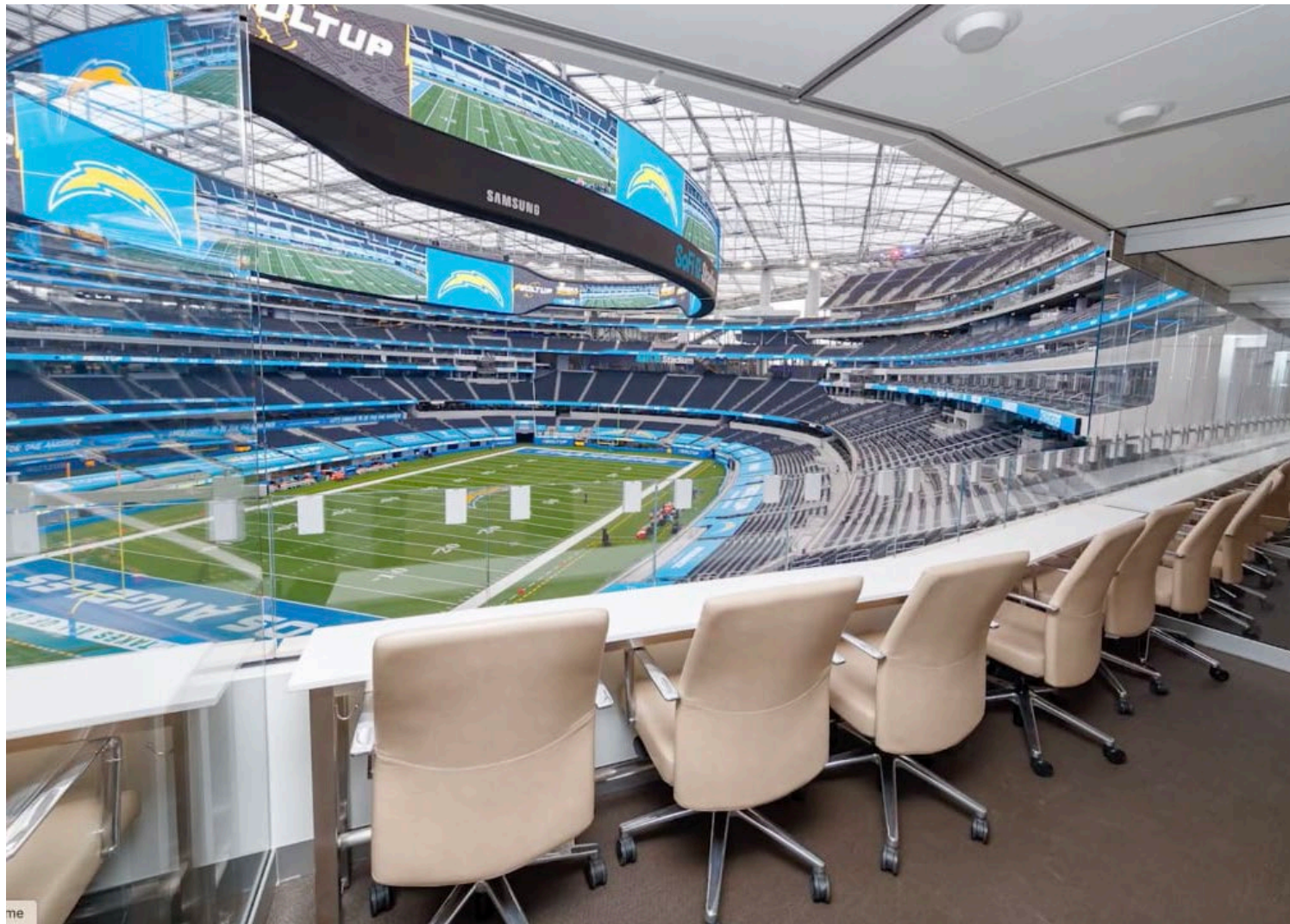
Architect: Ghafari Associates, LLC

American Airlines wanted to give customers, “ a clean, modern feel that makes them feel relaxed.” – Sunny Rodriguez, American spokesperson

Enviroleather™ California collection







Sports & Entertainment : SoFi Stadium, LA Rams.  
HKS Architects

## Designed to experience

*“The experiences we design are curated to provoke your senses, allow for the fan to participate with the event in new ways, and truly engage on an emotional level.”*

- Meena Krenek, Global Practice Directory Venues interiors, HKS.

Enviroleather™ Wyoming collection



Hospitality : Angels Envy Bourbon Club, **Cardinals Stadium**

# Designed to entertain

Architect : Lockett & Farley  
Design : Jack Porter



Through a partnership with the University of Louisville Athletic Association and Cardinal Stadium, the club spans the length of the football field. The massive space accommodates up to 1500 for receptions and 700 for banquets.

- Gigi DaDan, Angels Envy GM.



Enviroleather™ California collection

Workplace : The United Nations, New York, NY  
General Assembly

Designed for all.

Architect : Wallace Harrison  
Seating capacity 1800



Enviroleather™ Montana collection

Sustainable technology . Limitless Color . Ultimate performance



enviroleather™  
envirosil™  
envirowoven™  
enviroleather prints™

[www.Ldiinteriors.com](http://www.Ldiinteriors.com) . tel. 603-332-0700 . [Customerservice@ldiinteriors.com](mailto:Customerservice@ldiinteriors.com)