

LDIinteriors™

Sustainable Technology · Limitless Color · Ultimate Performance

Alchemist repeat 14" w x 12" d

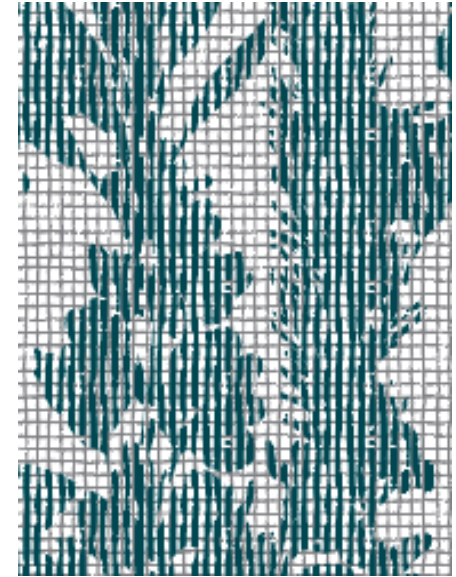


Carbon 10050

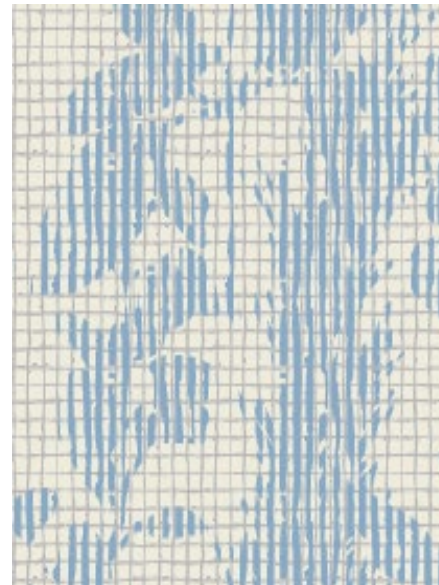
www.lidiinteriors.com



Regal Blue 10051



Sage 10053



Pale Blue 10052



Rose 10054

866.332.0700

customerservice@lidiinteriors.com

LDIinteriors™

Sustainable Technology · Limitless Color · Ultimate Performance

Lunaria repeat 16" w x 14" h



Winter white 10000

www.lidiinteriors.com



Dark Blue 10001



Teal 10004



Your favorite old jeans 10003



Bubblegum 10002

866.332.0700

customerservice@lidiinteriors.com

LDIinteriors™

Sustainable Technology · Limitless Color · Ultimate Performance

Seismic repeat 16" w x 10" h



Shift 10025

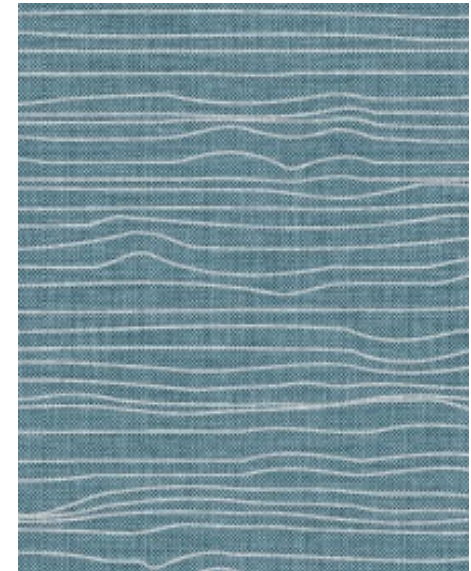
www.lidiinteriors.com



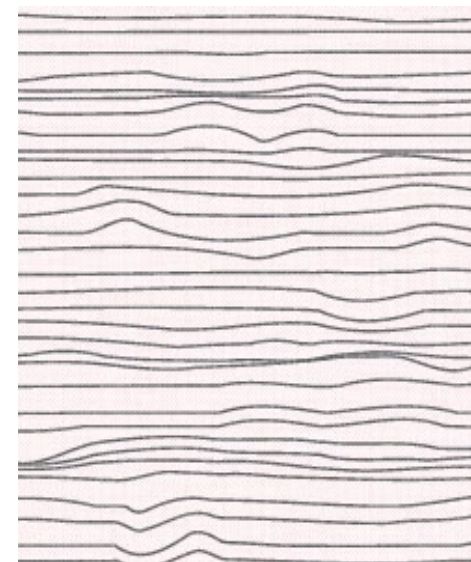
Deep Blue 10026



Denim 10030



Periwinkle 10028



Stark white 10027

866.332.0700

customerservice@lidiinteriors.com

Typical Physical Properties

TEST	UNITS	METHODS	RESULTS
Width	inches (cm)	ASTM D-1776	54 (137)
Thickness	inches (mm)	ASTM D-1776	0.043 (1.1)
Weight	O/yd2 (g/m2)	ASTM D-3776	17.0 (576)
Abrasion #10 Duck Cloth	Double Rubs	Wyzenbeek ASTM-D-4157	200,000+
Crocking	AATCC scale	AATCC-8	5 dry 5 wet (water) 5 wet (alcohol)
Flammability		UFAC	CLASS 1
		NFPA 260-A	CLASS 1
		CA TB 117-2013 Section 1	Pass
		ASTM E-84 (adhered)	CLASS A
Colorfastness	Light	AATCC-16A	CLASS 5
Emissions		California 01350	PASS
Hydrolytic Stability		ISO 1419 : 1995 (E) Method C "Tropical Test"	Pass (15+ Weeks)
		ASTM D 3690-02	Pass (15+ Weeks)

Content: 55% TPE, 35% Polyester, and 10% Cotton

LDIinteriors™

Sustainable Technology · Limitless Color · Ultimate Performance

Features of EnviroLeather™

Durability & Performance

- Resists cracking, peeling and delamination
- Superior chemical resistance
- Stain resistant, easy to clean and disinfect
- Resists sagging and wrinkling to maintain tight, tailored look
- Superior seam abrasion and durability

Environmental & Health Safety Benefits

- PVC-Free, no plasticizers, phthalate-free
- Passes CAL 01350, low VOC emissions
- No perfluorochemicals (PFC-Free)
- No flame retardants, bromine-free
- No heavy metals
- Includes recycled and renewable content
- Animal friendly

Disinfecting/Cleaning Information

EnviroLeather™ utilizes a high tech polymer that results in excellent chemical resistance and cleanability.

Visit www.lidiinteriors.com for complete cleaning instructions and a list of cleaners and disinfectants that we have tested.

Denim Jean Information

EnviroLeather™ was developed to resist permanent staining from denim jeans. Stains that do occur can be easily removed from all of our faux leather collections.