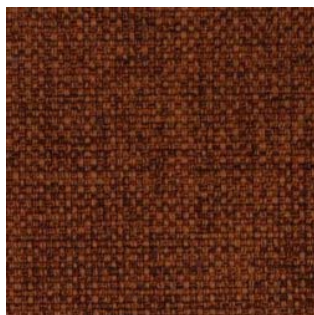
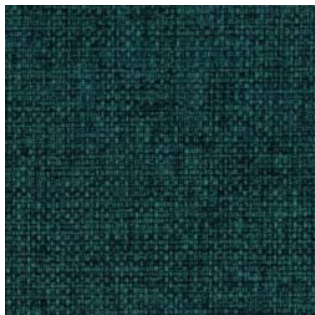
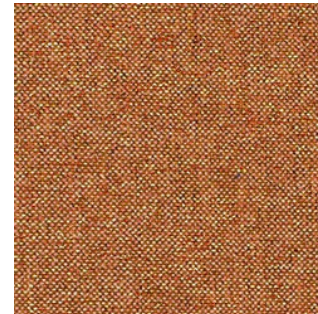


The
Debut
Collection

Tuft
Toile
Tweed



The background of the entire image is a dark, textured fabric, possibly a woven textile, with numerous water droplets of various sizes scattered across its surface. The droplets are clear and reflect light, highlighting the texture of the fabric. The overall tone is dark and moody.

The beauty of a woven with the benefits of a durable coated fabric.

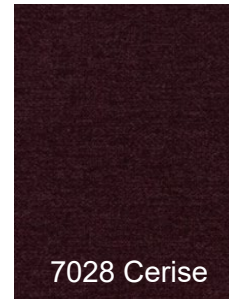
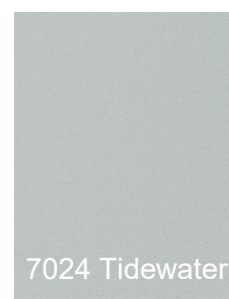
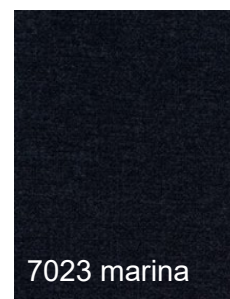
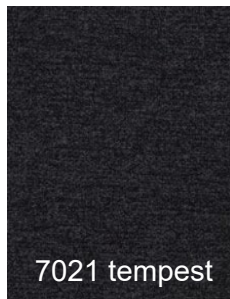
The LDI Debut collection combines a woven textile with PFAS-Free coating technology and an inherent liquid barrier. The result is an impervious upholstery textile with the dimensional texture of a woven and the performance of a durable coated fabric.

tuft collection

Flowers need time to bloom.

fabrics 2019 2019

tuft collection



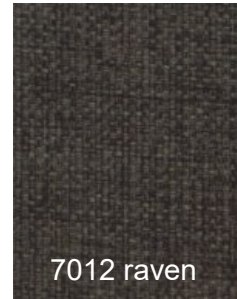
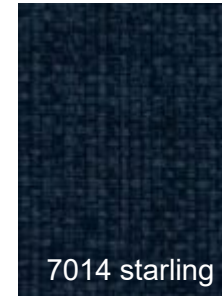
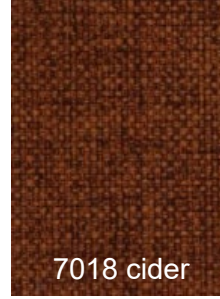
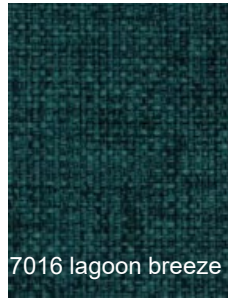
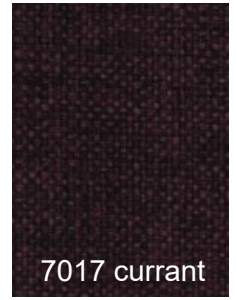
the Debut collection

- Dimensional Texture
- Liquid Barrier
- Breathable
- Chemical Resistant
- Stain Resistant
- Sustainable

Toile collection



toile collection

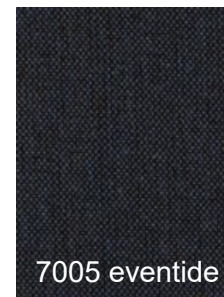
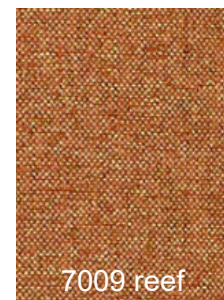
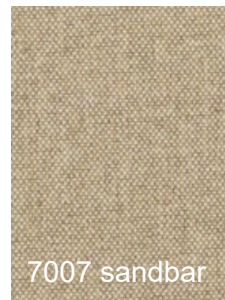
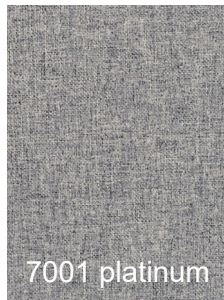


the Debut collection

- Dimensional Texture
- Liquid Barrier
- Breathable
- Chemical Resistant
- Stain Resistant
- Sustainable

tweed collection

tweed collection



the Debut collection

- Dimensional Texture
- Liquid Barrier
- Breathable
- Chemical Resistant
- Stain Resistant
- Sustainable

Debut woven textiles enhance your Sustainability story without sacrificing Performance.

Use : non-clinical healthcare, senior living, corporate & hospitality

Sustainable Technology

- PFAS free, including PFC's + PFOA's
- PVC – Free, no plasticizers
- Passes CAL 01350, low VOC emissions
- No added antimicrobial chemicals
- No added flame retardants
- No heavy metals

Ultimate performance

- Liquid barrier
- Breathable
- Chemical resistant
- Stain resistant
- Abrasion resistant
- Sustainable



Debut textile approved chemicals for cleaning and disinfection.

Cleaning and disinfecting products that are considered acceptable based on lab testing and feedback from the field.

Accel TB

Caviwipes

Clorox Healthcare Bleach Germicidal Wipes

Clorox Hydrogen Peroxide wipes

Diluted Bleach (1:10)

Isopropyl Alcohol (91%)

Neutral Disinfectant Cleaner

Oxivir TB

Purell Food Service Sanitizer

Sani Pro Multi-Surface Wipes

Sani Pro Table Turner

Super Sani Cloth

Super Sani Cloth AF3

Super Sani Cloth w/Bleach

Chemicals listed indicate they have been submitted and pass Lab testing. It also means they have not had systemic complaints from the field, indicating there is no serious problem with compatibility.

Regularly using multiple types of chemicals can lead to accelerated degradation that cannot be predicted or screened for.

Follow the instructions of your chemical supplier and combine chemicals at your own risk.

If you would like our recommendation, please refer to the specific products Cleaning code and instructions.

Debut Stain resistance test results

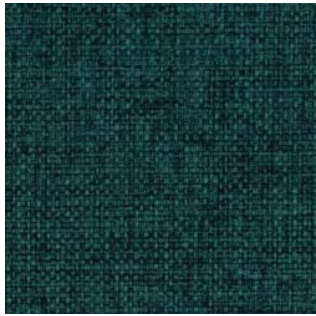
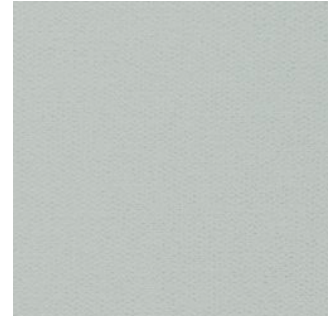
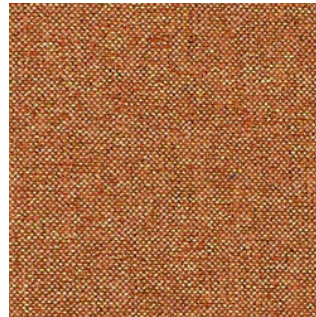
2 hours & 24 hours

Class 5	Excellent
Class 4	Good
Class 3	Fair
Class 2	Poor
Class 1	Very Poor

Ratings are after cleaning stain
A dry cloth, or soap and water was used to clean off most stains
Tougher stains were cleaned with 70% or 90% isopropyl alcohol

Stain Resistance per CFFA 141	Staining after 2 hours	
	Debut	
	Light Colors	Dark Colors
Ketchup	4.5	5
Mayonnaise	5	5
Soy Sauce	5	5
Butter	5	5
Cola	5	5
Salad Dressing	5	5
Simulated Blood	5	5
Urine	5	5
Motor Oil	4	5
Liquid Foundation	4.5	4.5
Hairspray	5	5
Mascara	4.5	5
Lipstick	2	1
Coffee	5	5
Tea	5	5
Ball Point Ink	5	5
Dry Blue Jean Crock	3	5
Wet Blue Jean Crock	4	5
Indigo Dye	5	5
Iodine/Betadine	4.5	4.5

Staining after 24 hours	
Debut	
Light Colors	Dark Colors
4.5	5
5	5
4	5
4.5	5
5	5
5	5
4.5	5
5	5
2	3
2	4
4	4
3	4
2	1
5	5
4.5	5
5	5
3	5
4	5
4	5
3	4.5



Tuft The
Toile Debut
Tweed Collection

LDIinteriors™
Sustainable Technology . Limitless color . Ultimate Performance